

6FM100D-X 12V 100Ah(20hr)

The rechargeable batteries are lead-lead dioxide systems. The dilute sulfuric acid electrolyte is absorbed by separators and plates and thus immobilized. Should the battery be accidentally overcharged producing hydrogen and oxygen, special one-way valves allow the gases to escape thus avoiding excessive pressure build-up. Otherwise, the battery is completely sealed and is, therefore, maintenance-free, leak proof and usable in any position.



Battery Construction

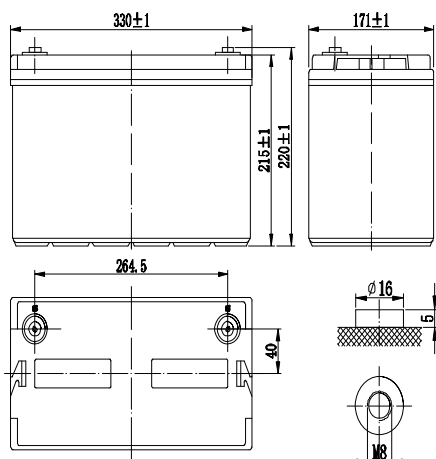
| Component | Positive plate | Negative plate | Container | Cover | Safety valve | Terminal | Separator | Electrolyte |
|--------------|----------------|----------------|-----------|-------|--------------|----------|------------|---------------|
| Raw material | Lead dioxide | Lead | ABS | ABS | Rubber | Copper | Fiberglass | Sulfuric acid |

General Features

- Absorbent Glass Mat (AGM) technology for efficient gas recombination of up to 99% and freedom from electrolyte maintenance or water adding.
- Not restricted for air transport-complies with IATA/ICAO Special Provision A67.
- UL-recognized component.
- Can be mounted in any orientation.
- Computer designed lead, calcium tin alloy grid for high power density.
- Long service life, float or cyclic applications.
- Maintenance-free operation.
- Low self discharge.

Dimensions and Weight

| | |
|--------------------------|-------------|
| Length(mm / inch) | 330 / 12.99 |
| Width(mm / inch) | 171 / 6.73 |
| Height(mm / inch) | 215 / 8.46 |
| Total Height(mm / inch) | 220 / 8.66 |
| Approx. Weight(Kg / lbs) | 32 / 70.5 |



Performance Characteristics

| | |
|--|--------------|
| Nominal Voltage | 12V |
| Number of cell | 6 |
| Design Life | 10 years |
| Nominal Capacity 77°F(25°C) | |
| 20 hour rate (5.00A, 10.8V) | 100Ah |
| 10 hour rate (9.50A, 10.8V) | 95.0Ah |
| 5 hour rate (17.4A, 10.5V) | 87.0Ah |
| 1 hour rate (65.2A, 9.6V) | 65.2Ah |
| Internal Resistance | |
| Fully Charged battery 77°F(25°C) | 5mOhms |
| Self-Discharge | |
| 3% of capacity declined per month at 20°C(average) | |
| Operating Temperature Range | |
| Discharge | -20~60°C |
| Charge | -10~60°C |
| Storage | -20~60°C |
| Max. Discharge Current 77°F(25°C) | 900A(5s) |
| Short Circuit Current | 2100A |
| Charge Methods: Constant Voltage Charge 77°F(25°C) | |
| Cycle use | 2.30-2.35VPC |
| Maximum charging current | 30A |
| Temperature compensation | -30mV/°C |
| Standby use | 2.23-2.27VPC |
| Temperature compensation | -20mV/°C |

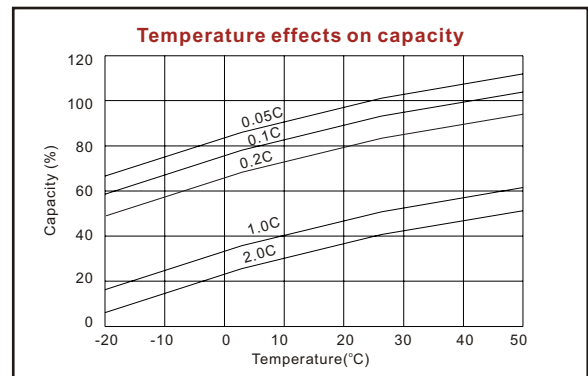
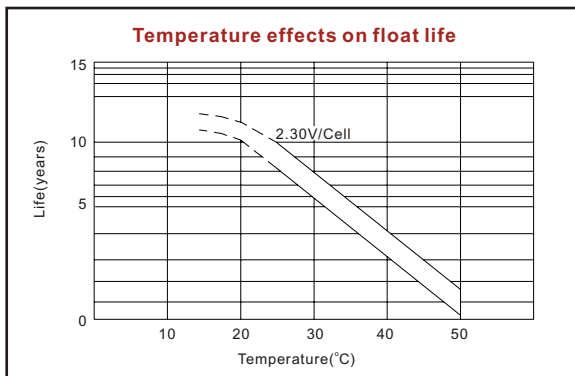
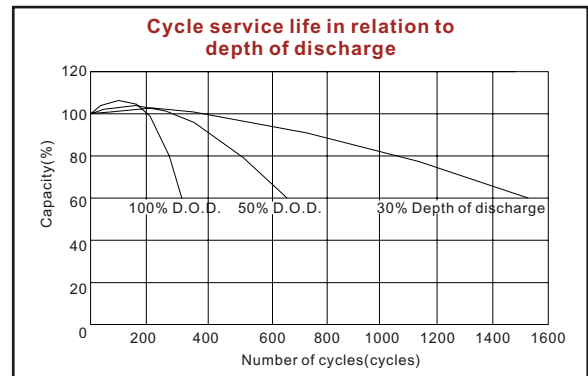
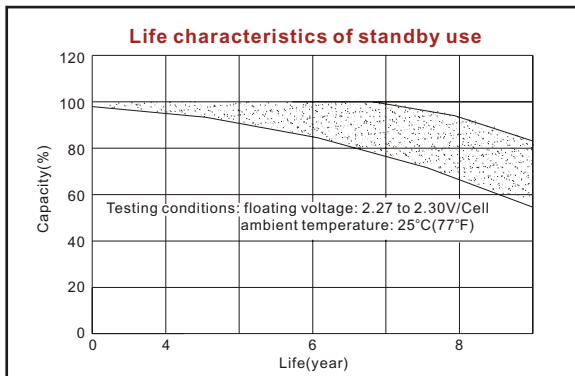
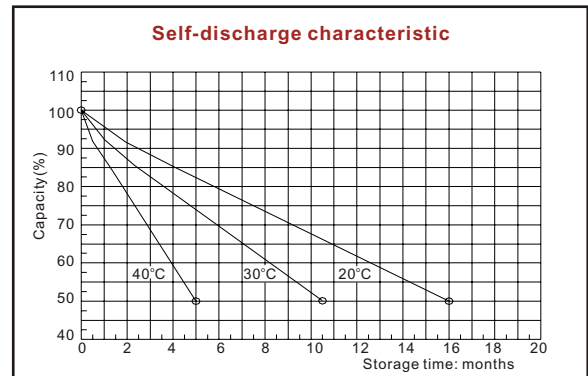
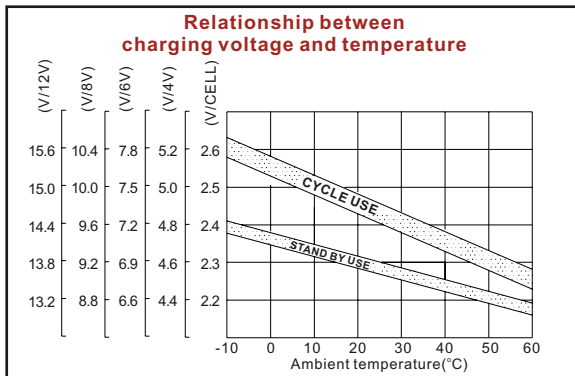
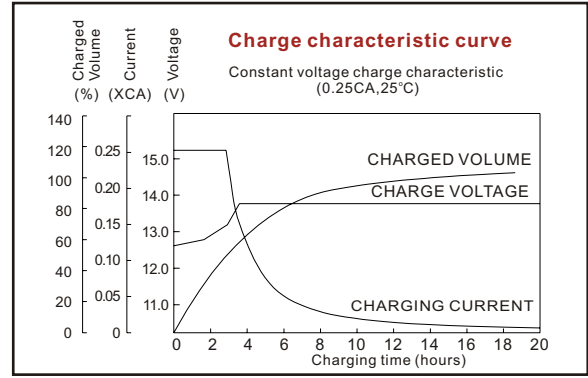
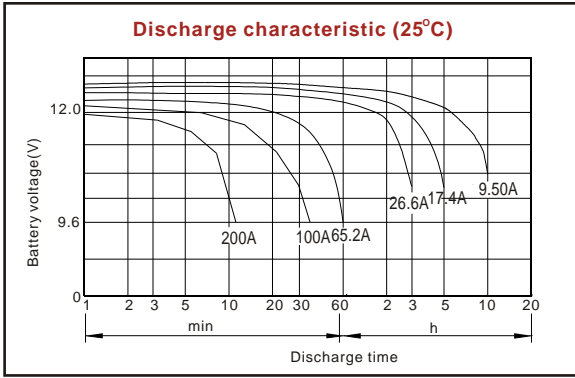
Discharge Constant Current (Amperes at 77°F25°C)

| End Point Volts/Cell | 5min | 10min | 15min | 30min | 45min | 1h | 3h | 5h | 10h | 20h |
|----------------------|------|-------|-------|-------|-------|------|------|------|------|------|
| 1.60V | 298 | 220 | 180 | 105 | 78.9 | 65.2 | 27.6 | 18.9 | 9.75 | 5.20 |
| 1.65V | 281 | 212 | 173 | 101 | 77.1 | 61.6 | 27.4 | 18.2 | 9.70 | 5.15 |
| 1.70V | 257 | 192 | 159 | 93.6 | 71.5 | 60.6 | 26.9 | 17.9 | 9.65 | 5.10 |
| 1.75V | 230 | 180 | 148 | 90.7 | 69.9 | 59.6 | 26.6 | 17.4 | 9.60 | 5.05 |
| 1.80V | 210 | 168 | 139 | 88.7 | 68.6 | 56.5 | 25.1 | 17.1 | 9.50 | 5.00 |

Discharge Constant Power (Watts at 77°F25°C)

| End Point Volts/Cell | 5min | 10min | 15min | 30min | 45min | 1h | 2h | 3h | 5h |
|----------------------|------|-------|-------|-------|-------|-----|------|------|------|
| 1.60V | 520 | 376 | 311 | 194 | 147 | 122 | 69.7 | 52.3 | 35.6 |
| 1.65V | 491 | 364 | 306 | 183 | 143 | 116 | 66.9 | 50.7 | 35.2 |
| 1.70V | 454 | 346 | 290 | 178 | 134 | 112 | 65.9 | 50.4 | 34.8 |
| 1.75V | 419 | 339 | 285 | 173 | 131 | 109 | 63.7 | 48.6 | 34.2 |
| 1.80V | 394 | 316 | 271 | 167 | 128 | 102 | 61.7 | 48.0 | 33.8 |

(Note)The above characteristics data are average values obtained within three charge/discharge cycles not the minimum values.



ISO9001:2000

MH25860

G4M19906-9202-E-16

www.vision-batt.com

Shenzhen Center Power Tech. Co., Ltd.
 Center Power Industrial Park, Tongfu Industrial District Dapeng Town, 518120 Shenzhen, China
 Tel: (+86-755) 8431 8088 Fax: (+86-755) 8431 8038 E-mail: sales@vision-batt.com