



**VISION GROUP**  
Shenzhen Center Power  
Tech.Co.Ltd.,

# Lithium Iron Phosphate Battery

## V-LFP12V30Ah

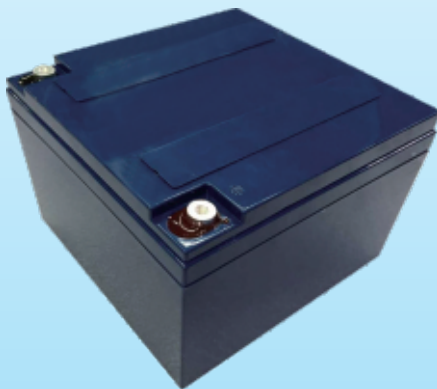
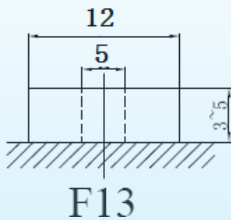
### Overview

The V-LFP12V30AH rechargeable battery is optimized for low rate application which require high energy density.

### Features

- High energy density
- Automatic protection with battery manager system internally
- Low self-discharge
- Long cycle life
- Excellent performance in all the operating temperature

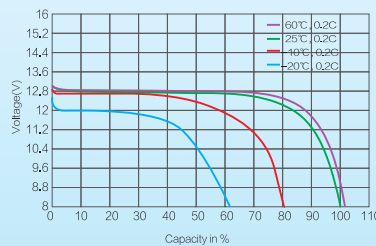
### Terminal



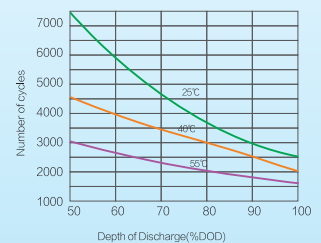
### Battery Specification

Nominal Characteristics	
Nominal Voltage /V	12.8
Nominal Capacity /Ah (25° C , 0.2C)	≥30
Mechanical characteristics	
Weight (approximate)/Kg	4.7±3%
Dimension L*W*H /mm	166*175*125
Terminal	F13
Electrical characteristics	
Voltage window/V	9.2 to 14.6
Float charge voltage/V	13.8
Max. continue discharge current/A	30
Max. permanent discharge current/A	80A 10Sec.
Max. continue charge current/A	20
Operating conditions	
Cycle life (+20°C 0.2C 100%DOD)	>2500 Cycles
Operating temperature	Discharge -30°C to 60°C; Charge 0°C to 60°C
Storage temperature	0 to 30°C
Storage duration	12 months at 25°C
Safety standard	UI1642 at cell level

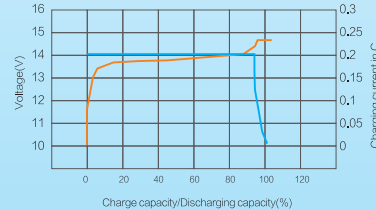
Dis charge curves under differents temperatures



Cycle life versus DOD and temperature at 0.2C



0.2C CC-CV charge characteristic



Self-discharge characteristic

